



Final Approval Certificate

Number: UK-RES-2402245

Name: Inspire - Spirometry Patient Leaflet

Document Type: Material

Subtype: Non-Promotional

Classification: Patient literature

Audience: Doctors Primary Care Nurse Primary Care Nurse Secondary Care Other Relevant Decision Makers Patients Physiotherapists Practice Pharmacist Retail Pharmacists

Authorised Users: Account Specialist Account Specialist - Commercial Account Specialist - Virtual Hospital Respiratory Specialist Key Account Manager - AIR Marketing – AIR Regional Business Manager Regional CX Lead

Format of Distribution: Hard Copy

Country: United Kingdom

Version: 2 . 0

We certify that we have examined the attached material or arrangements to which no subsequent amendments can be made and believe that this is in accordance with the requirements of the relevant advertising regulations and the current relevant Code(s) of Practice, is not inconsistent with the marketing authorisation and the Summary of Product Characteristics and is a fair and truthful representation of the facts about the medicine. It also conforms to internal policies and standards of this company.

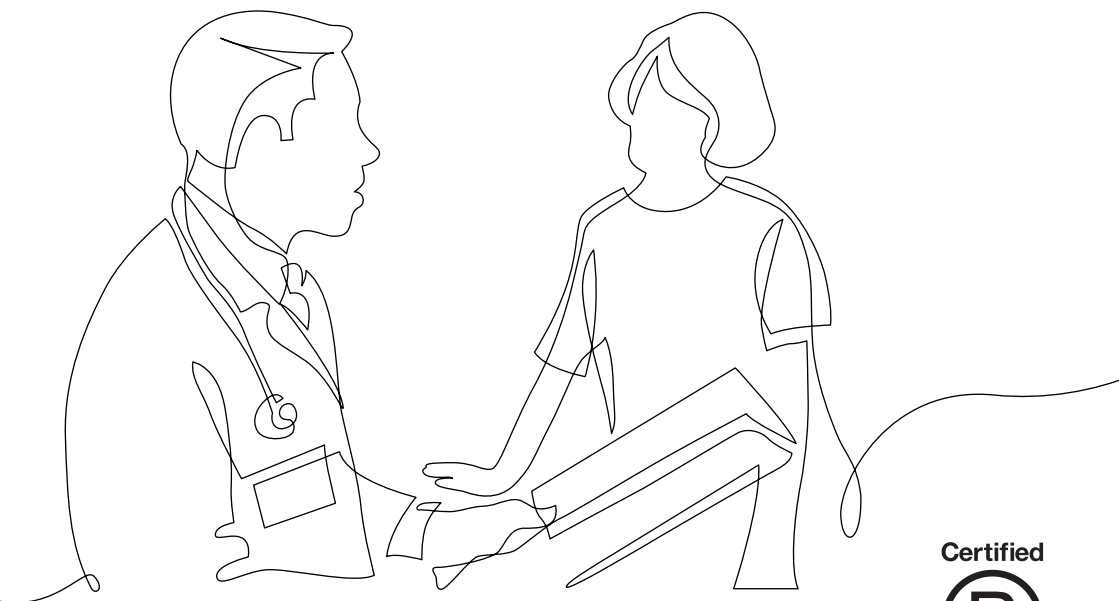
Electronic Certification	
Sanjay Gudimetla - Medical Signatory Certification (s.gudimetla@chiesi.com)	Date: 12-Dec-2024 10:31:48 GMT+0000
Hard Copy Certification	
I certify that I have checked the attached material in its final form and believe that it is in accordance with the electronically certified item	
Authorised Signatory	Date
FOR PRESS RELEASES ONLY	
Managing Director (Not a Code requirement)	Date



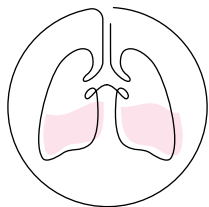
INSPIRE

THE ESSENTIAL GUIDE TO SPIROMETRY

A patient's guide to spirometry

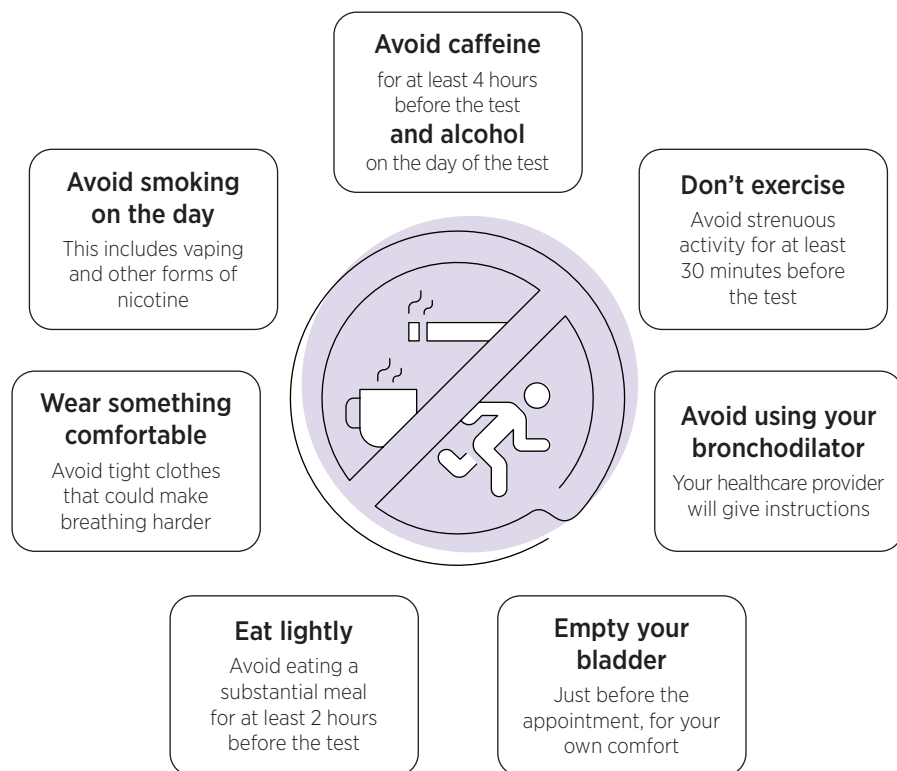


What is spirometry?^{1,2}



Spirometry is a simple test that helps your doctor or nurse understand how well your lungs are working. It measures how much air you can breathe out and how fast you can do it. This can help diagnose conditions like asthma, COPD or other respiratory conditions.

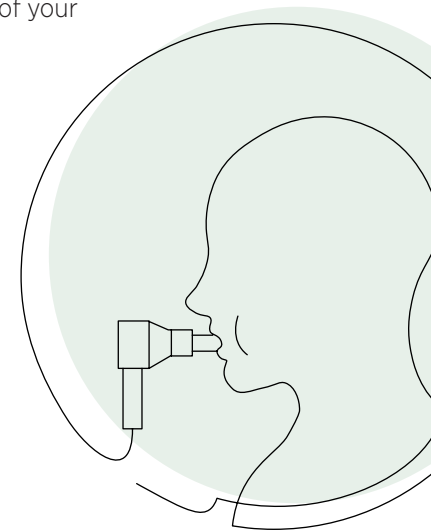
Prepare for your appointment before arriving^{1,3}



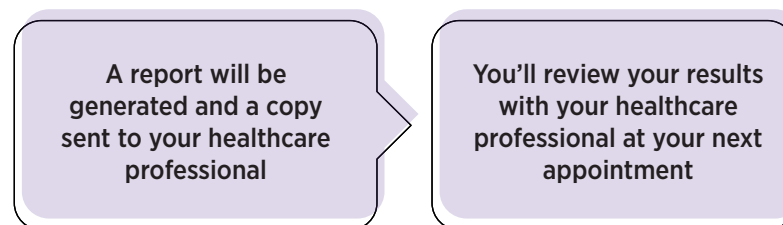
What you'll do during the test¹

During the test, it is important to follow the advice of your healthcare professional.

- 1 Height and weight will be measured
- 2 Sit upright in a chair with feet flat on the floor and legs uncrossed
- 3 Take a deep breath in until your lungs are completely full
- 4 Breathe out into the spirometer until your lungs are empty
- 5 Two types of breath might be measured:
 - A forceful breath where you will blow out as hard and as fast as you can
 - A relaxed breath where you breath out slowly and steadily
- 6 You may be asked to do a reversibility test to help diagnose conditions like asthma:
 - Use a bronchodilator (inhaled medication) to open up your airways
 - Wait 15–20 minutes then repeat the spirometry test to see if there is an improvement
- 7 Each type of blow will be repeated a few times to ensure best results with time to rest between each attempt



What you can expect after the test⁴



Questions you may have



Will I feel any pain?

No, the test is painless.⁴

How long does it take?

The initial test takes approximately 20 minutes; if reversibility is needed, you'll wait 20 minutes for the bronchodilator to take effect, followed by up to 20 more minutes of testing.^{3,4}

What if I don't do it right?

The healthcare team will guide you through the test step-by-step to make sure everything goes smoothly.¹

What are the risks involved?

Spirometry is straightforward and considered safe for most patients, but does require assessing your ability for maximum effort. The appointment may need to be delayed or avoided if you have a medical condition that could be made worse by spirometry, so discuss any pre-existing conditions with your healthcare professional before doing the test.^{2,4}

When can I resume normal activities?

After the test, you can leave the appointment and resume your usual activities.⁴

If you have any other questions, please don't hesitate to ask your doctor or nurse. They are here to help support you through this process.

COPD, chronic obstructive pulmonary disease.

References: 1. Performance of spirometry in adults. ARTP. 2023. Available from: https://www.artp.org.uk/resources/spirometry_sop_2023 [Accessed November 2024]; 2. Spirometry. NHS. 2021. Available from: <https://www.nhs.uk/conditions/spirometry/> [Accessed November 2024]; 3. Spirometry, NHS UEA Medical centre. 2024. Available from: <https://www.umsuea.co.uk/healthcare-information/spirometry/> [Accessed November 2024]; 4. What is spirometry? The Royal Wolverhampton NHS Trust. 2021. Available from: https://www.rwt.nhs.uk/PIL/MI_8027914_07.05.21_V_1_public.pdf [Accessed November 2024].